



PhilaPort

THE PORT OF PHILADELPHIA

Prepared for:



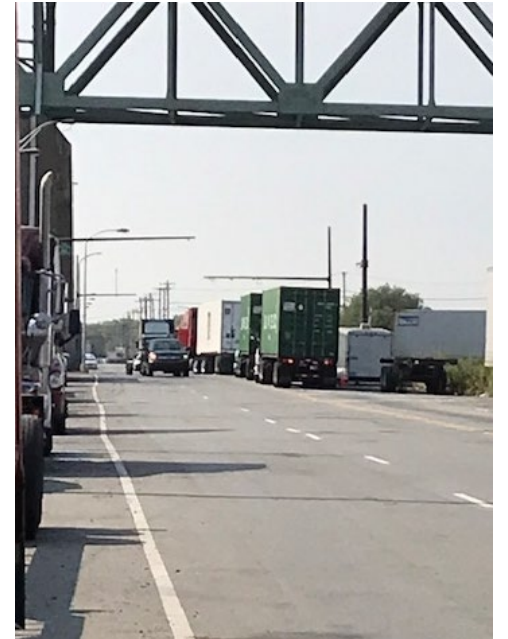
COVID-19 African Business & Policy Forum

Presented December 11, 2021

PhilaPort's Response to Global Supply Chain Crisis

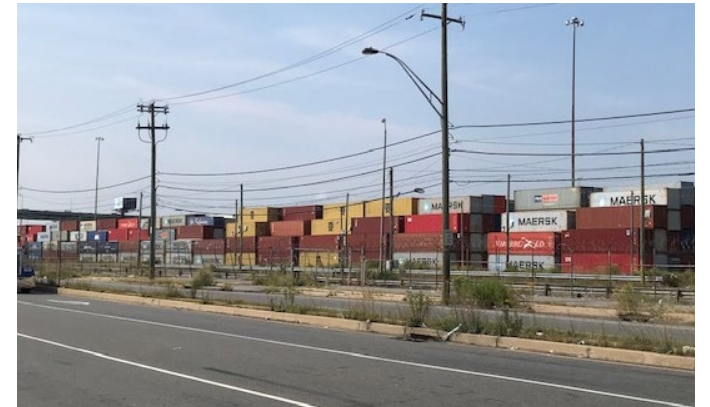
Packer Avenue Marine Terminal – Operator, Greenwich Terminals LLC (Holt)

- Terminal operations new extended gate hours
 - Monday through Friday, 7:30AM-11:30PM and Saturday hours 7:00AM-4:00PM
- Create (2) satellite container yards at
 - 98 Annex: 20 acres – *PhilaPort initiated sub-lease for use*
 - Pier 82: 13 acres
- CSX Intermodal Initiative
 - Holt provided (2) top picks
 - Additionally, Holt provided labor
- Purchase additional chassis
- Paused all vessel operation for three days; Sept. 8th-10th
 - Delayed (4) vessel arrivals

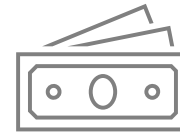
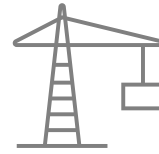


Current Status of PAMT

- Truck que times much improved as outcome of reset
- CSX Enhanced operations to commence by end of October



PhilaPort's Marine Cargo Economic Impact Summary



- ✓ **\$15 billion** - Total impact of marine cargo activity that the port has generated for Pennsylvania in YR19
- ✓ More than **6.4 million** in cargo tonnage per year
- ✓ **\$864.9 million** - Total wages, salaries and local consumption expenditures are created in the local and regional economy by port activity
- ✓ **10,341 jobs** generated by marine cargo activity
- ✓ Local business received **\$456.8 million** of revenue
- ✓ State & local receive **\$93.5 million/year** in PhilaPort generated taxes

Did you know?

#14

Top U.S. Import Port
in the Country

#1

Fastest Growing Port
in the U.S.

#1

In Refrigerated Cargo
in the Country



Cargo Statistics | PhilaPort

December (YTD)

Containers

7%

TEUs



YTD 2019

598,278

YTD 2020

640,799

January - December 2020 U.S. Container Growth (YTD)

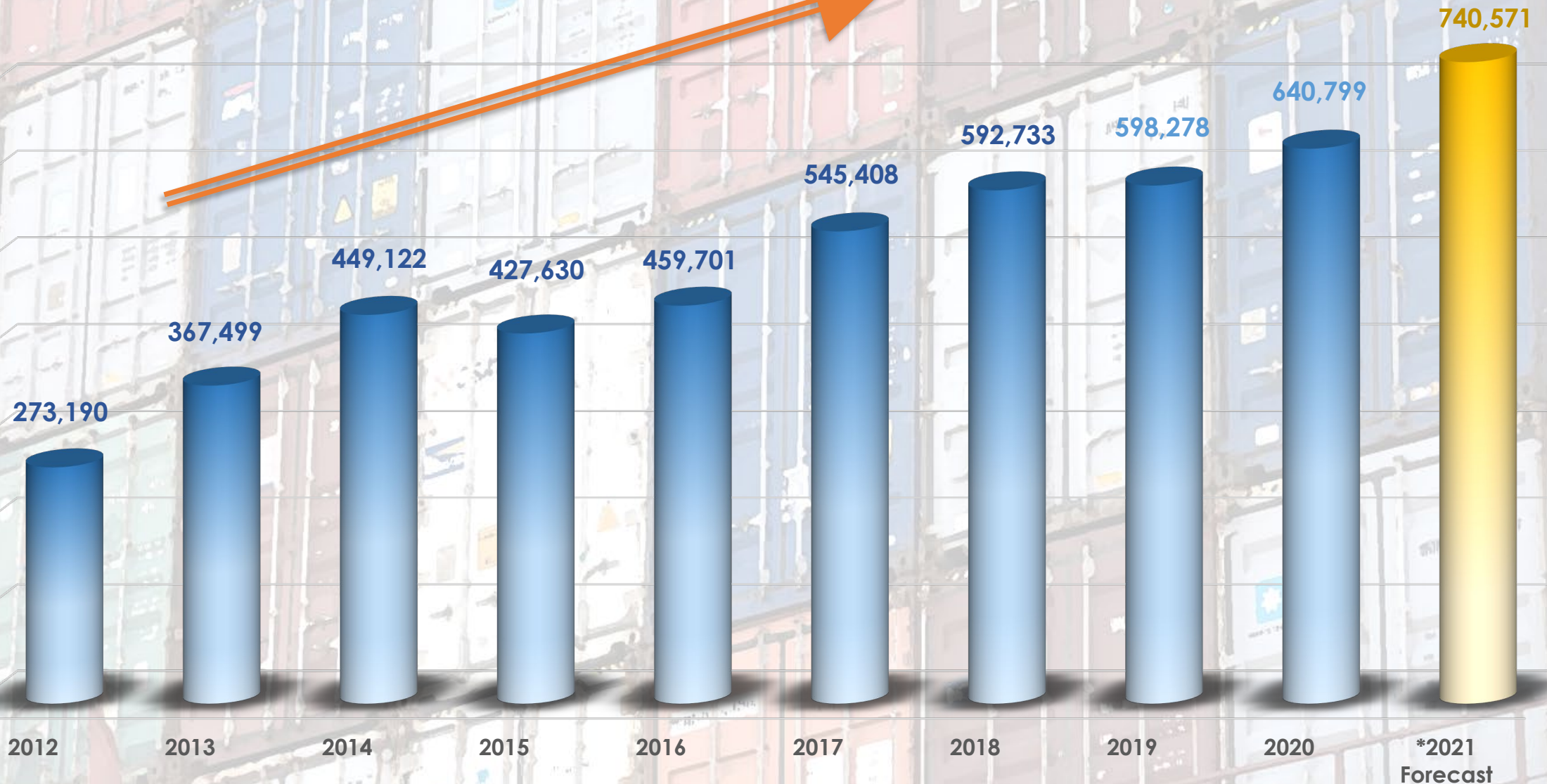
US Trade	-1%	↓
US East Coast	-2%	↓
Baltimore	-2%	↓
Boston	-11%	↓
Charleston	-4%	↓
Jacksonville	1%	↑
Norfolk	-4%	↓
NY/NJ	2%	↑
Philadelphia	7%	↑
Savannah	2%	↑



Compound Annual Growth Rate is 12% per year.

PhilaPort Container Volumes (in TEUs)

October YTD 2021 +15%

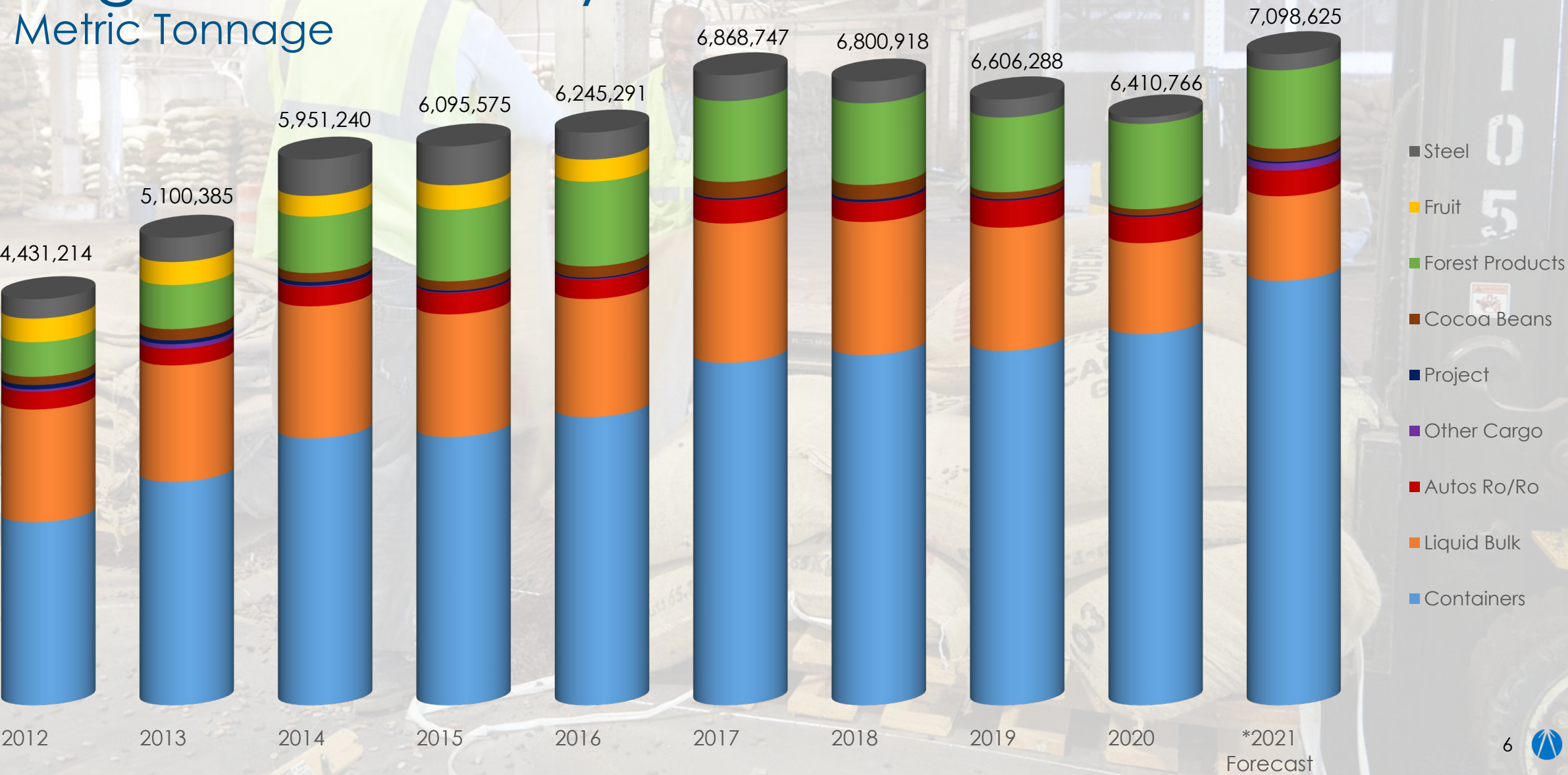


PhilaPort

Cargo Commodity

in Metric Tonnage

Compound Annual Growth Rate is 5.4% per year.



Current Vessel Capacity

14,000+ TEU

Big Ship Ready✓

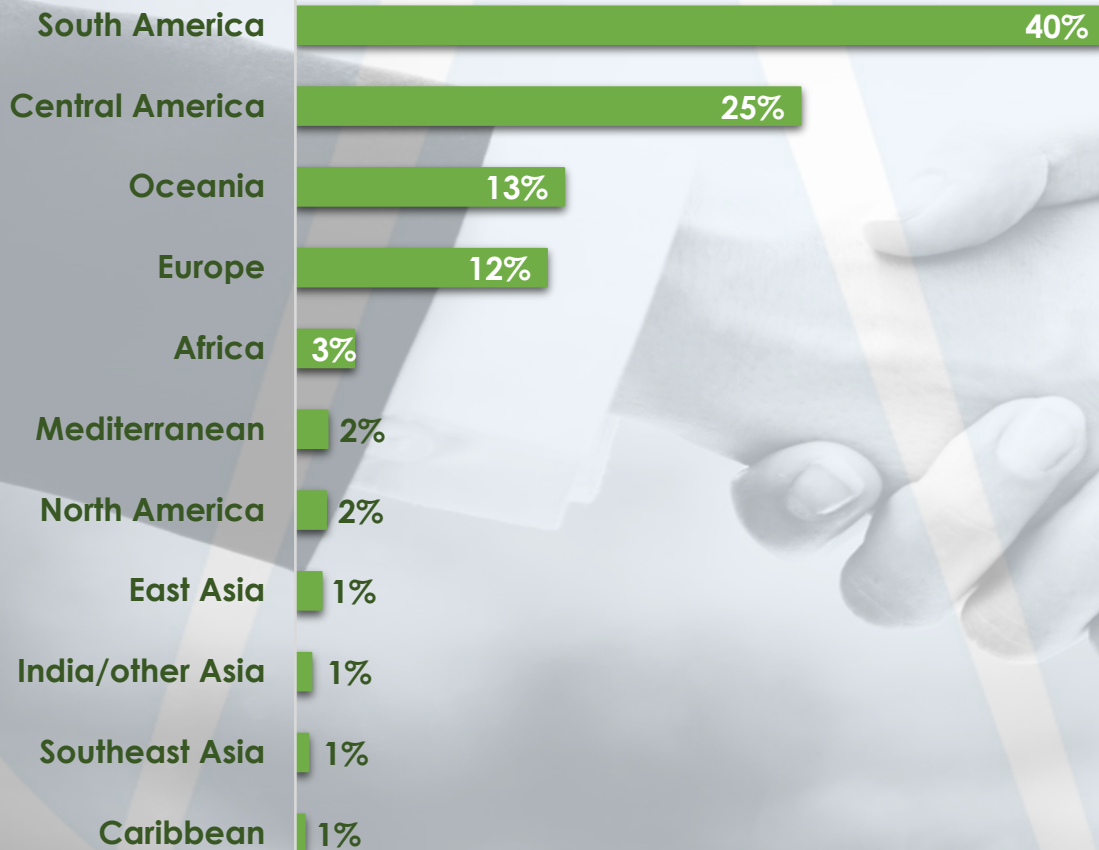


Philadelphia

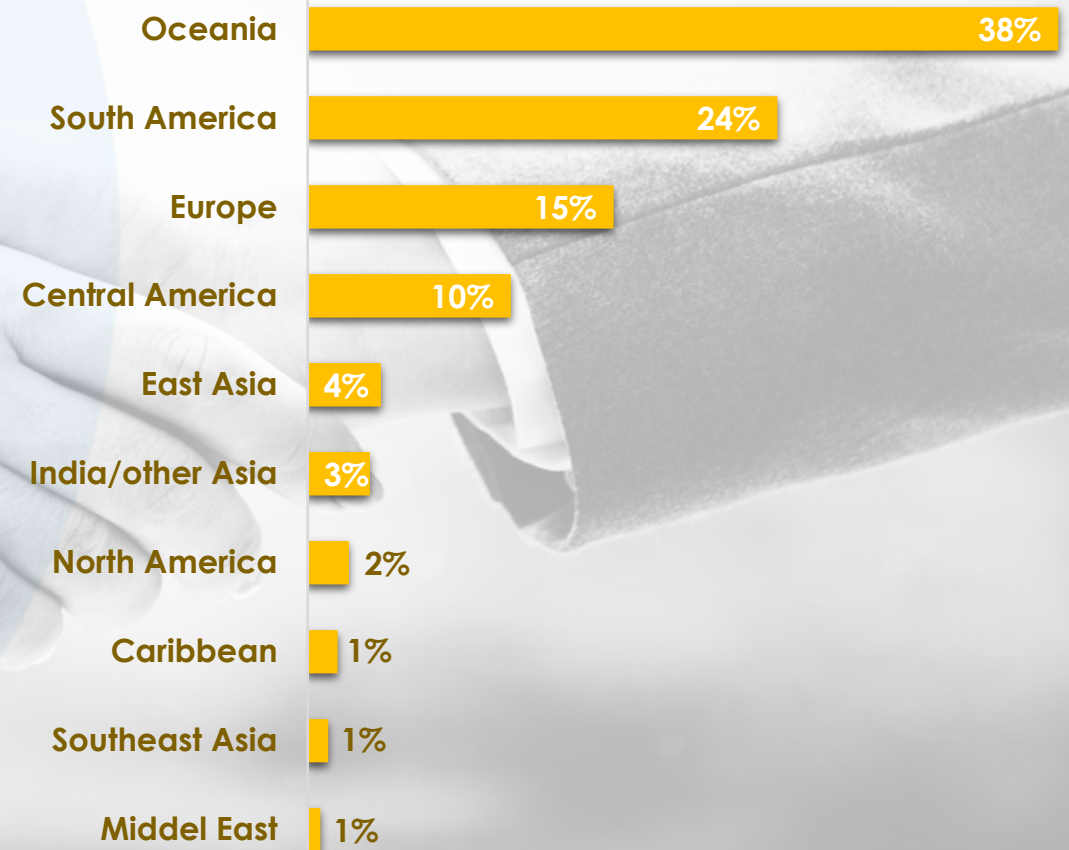
Trade Lanes 2020

Total Trade Lanes percentage in TEUs

Imports(%)



Exports(%)



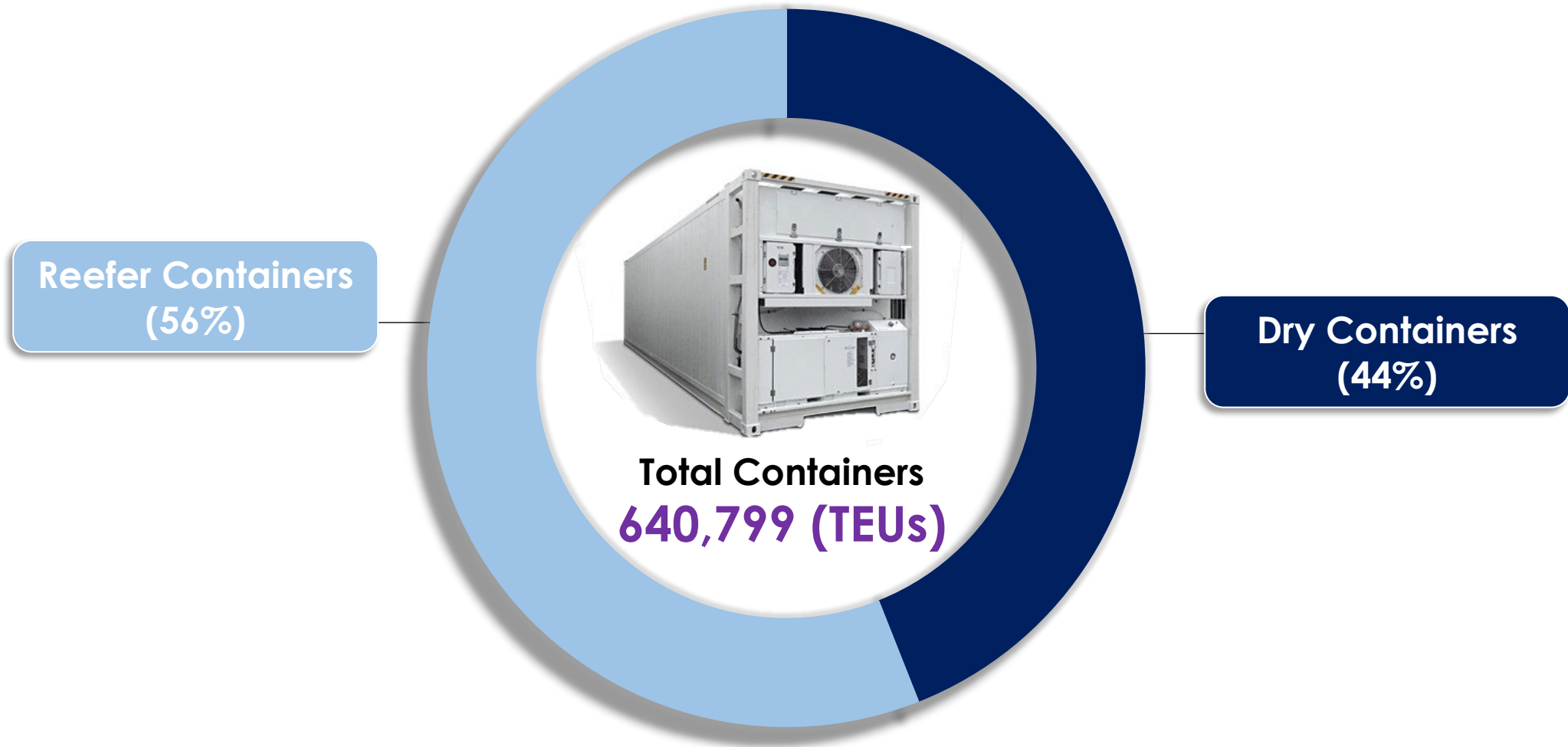
Greater Philadelphia Ports

The Global Leader in Food Cargoes

- \$3.8 billion in fruit imports imported in 2020
- \$5.6 billion of food and associated products imported into the USA in 2020

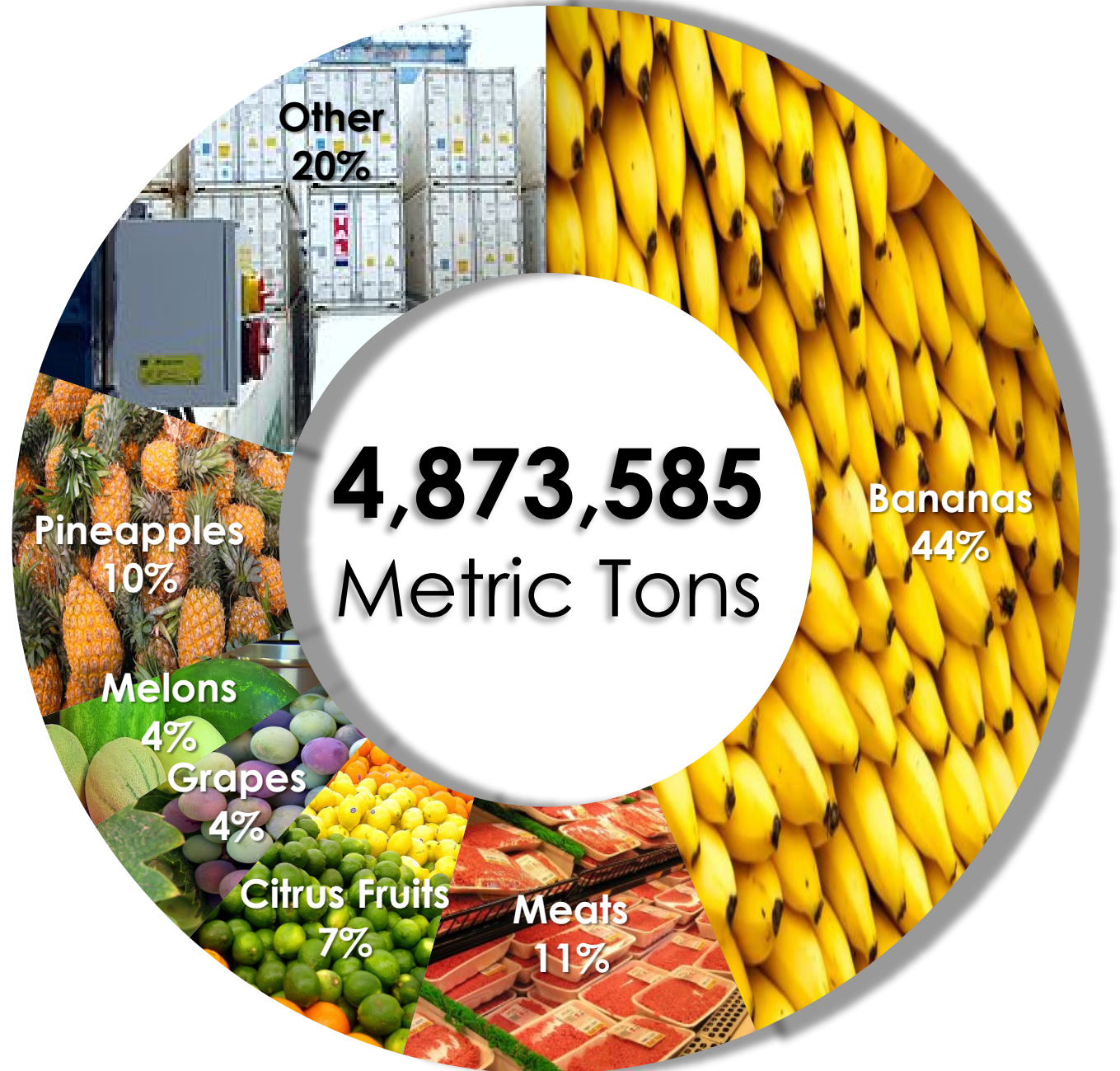


Container (TEU) percentage for 2020



Delaware River Refrigerated Cargoes

Refrigerated cargoes
along the river are up
21% compared to last
year.



Pier 84 | Dedicated Cocoa Facility

#1 Cocoa Handling Port in the U.S.

Terminal Area:	13.9 acres
Cargoes	Cocoa beans and cocoa products
Number/Size of Berths:	1 · Berth: 855 linear ft.
Berth Depth at MLW:	32 ft.
Number/Size of Storage Warehouses:	1 · Dry storage, 500,000 sq. ft. (46,452 sq. m.) 1 · Dry storage, 40,000 sq. ft. (3,715 sq. m.)
Loading Docks:	Canopied loading platforms for over 40 trucks
Highways:	Close access to highways I-95 and I-76



2020 PhilaPort Total Trade Africa Container volumes.

The Port of Philadelphia shows 11,116 TEUs in Africa's total trade in 2020, down 5% compared to previous year.



Top 5 Africa Total Trading Partners	TEUs	Share%
IVORY COAST	4,385	41.39%
SOUTH AFRICA	3,188	30.09%
GHANA	2,237	21.12%
MOROCCO	506	4.78%
NIGERIA	278	2.62%
Grand Total	10,594	100.00%

Top 5 Africa Import Trading Partners	TEUs	Share%
IVORY COAST	4,379	41.41%
SOUTH AFRICA	3,182	30.09%
GHANA	2,235	21.14%
MOROCCO	506	4.79%
NIGERIA	272	2.57%
Grand Total	10,574	100.00%

Top 5 Africa Export Trading Partners	TEUs	Share%
ALGERIA	36	46.15%
TANZANIA	17	21.79%
KENYA	7	8.97%
NIGERIA	6	7.69%
IVORY COAST	6	7.69%
SOUTH AFRICA	6	7.69%
Grand Total	78	100.00%

Total Container Volumes (In TEUs)

11,116



Container Trade \$Value
\$403.7 Million

Top 5 Africa Commodities Total Trade	TEUs	Share%
180100 - COCOA BEANS, WHOLE OR RAW	6,215	64.88%
080521 - EDIBLE FRUIT AND NUTS; CITRUS FRUIT	1,474	15.39%
080510 - ORANGES, FRESH	1,086	11.34%
180310 - COCOA PASTE, NOT DEFATTED	442	4.61%
080540 - GRAPEFRUIT, FRESH OR DRIED	362	3.78%
Grand Total	9,579	100.00%

Top 5 Africa Import Commodities	TEUs	Share%
180100 - COCOA BEANS, WHOLE OR RAW	6,215	64.88%
080521 - EDIBLE FRUIT AND NUTS; CITRUS FRUIT	1,474	15.39%
080510 - ORANGES, FRESH	1,086	11.34%
180310 - COCOA PASTE, NOT DEFATTED	442	4.61%
080540 - GRAPEFRUIT, FRESH OR DRIED	362	3.78%
Grand Total	9,579	100.00%

Top 5 Africa Export Commodities	TEUs	Share%
390410 - POLYVINYL CHLORIDE	36	39.13%
490199 - PRINTED BOOKS, BROCHURES, LEAFLETS	34	36.96%
490110 - PRINTED BOOKS, BROCHURES, LEAFLETS	8	8.70%
98 - SPECIAL CLASSIFICATION PROVISIONS, OTHERS	6	6.52%
070820 - BEANS FRESH OR CHILLED	4	4.35%
730890 - STRUCTURES AND PARTS OF IRON OR STEEL	4	4.35%
Grand Total	92	100.00%



2020 PhilaPort Import Africa Breakbulk volumes.

The Port of Philadelphia received 498,996 in Metric Tonnage from Africa in 2020, down 74% compared to previous year (due to slowdown in importing Africa crude oil).



Top Africa Import Trading Partners	Mtons	Share%
EGYPT	150,851	30.23%
IVORY COAST	97,810	19.60%
SOUTH AFRICA	65,514	13.13%
MOROCCO	64,360	12.90%
GHANA	57,130	11.45%
NIGERIA	48,076	9.63%
ANGOLA	15,255	3.06%
Grand Total	498,996	100.00%

Top US Importers	Mtons	Share%
RIVERSIDE CONSTRUCTION MATERIALS,	97,961	27.64%
BANQUE DE COMMERCE DE	57,130	16.12%
GRJOCA	49,900	14.08%
TOTSA TOTAL OIL TRADIN	28,405	8.01%
MACQUARIE COMMODITIES TRADIN	24,405	6.88%
CSC SUGAR,	22,914	6.46%
ACCESS BANK	19,671	5.55%
CARGILL COCOA & CHOCOLATE,	19,509	5.50%
GENERAL COCOA COM	19,325	5.45%
CHEVRON CORPORA	15,255	4.30%
Grand Total	354,475	100.00%

Total Breakbulk Volumes (In Mtons)

498,996



Breakbulk Trade \$Value

\$756.8 Million

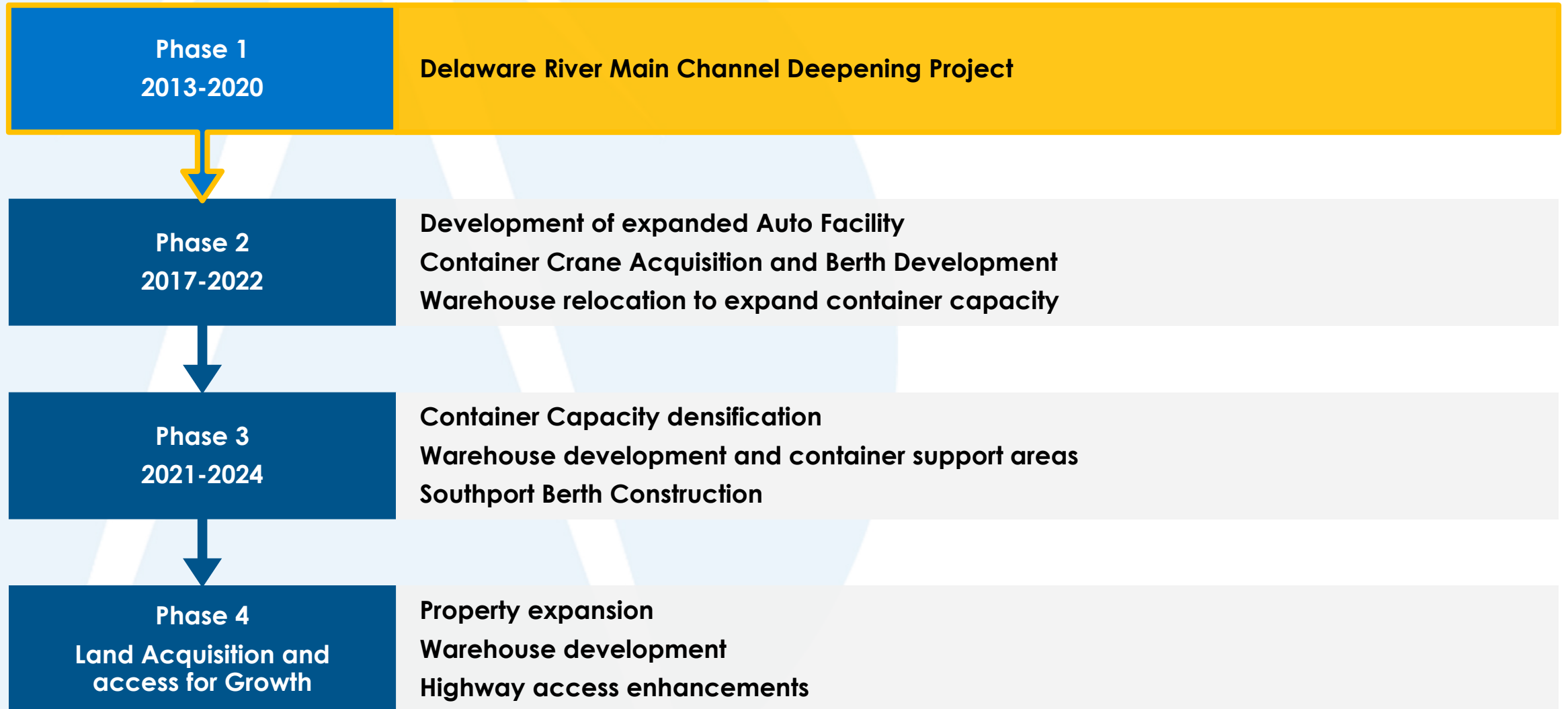
Top Africa Import Commodities	Mtons	Share%
250100 - SALT (INCL TABLE & DENATURED SALT)	147,861	29.63%
270900 - PETROLEUM OILS AND OILS FROM BITUMINOUS MINERALS, CRUDE	120,461	24.14%
180100 - COCOA BEANS, WHOLE OR BROKEN, RAW OR ROASTED	97,810	19.60%
170199 - CANE OR BEET SUGAR AND CHEMICALLY PURE SUCROSE,	47,319	9.48%
080520 - MANDARINS (INCLUDING TANGERINES AND SATSUMAS)	30,211	6.05%
280910 - DIPHOSPHORUS PENTAOXIDE	24,863	4.98%
721049 - FLAT-ROLLED IRON OR NONALLOY STEEL PRODUCTS	16,066	3.22%
391000 - SILICONES, IN PRIMARY FORMS	5,570	1.12%
080510 - ORANGES, FRESH	5,085	1.02%
271290 - MICROCRYSTALLINE PETROLEUM WAX, SLACK WAX, AND SIMILAR PRODUCTS,	2,990	0.60%
330499 - BEAUTY OR MAKE-UP PREPARATIONS AND PREPARATIONS FOR CARE OF THE SKIN (EXCLUDING MEDICAMENTS) OTHERS	482	0.10%
080521 - EDIBLE FRUIT AND NUTS; PEEL OF CITRUS FRUIT OR MELONS	264	0.05%
080540 - GRAPEFRUIT, FRESH OR DRIED	14	0.00%
Grand Total	498,996	100.00%



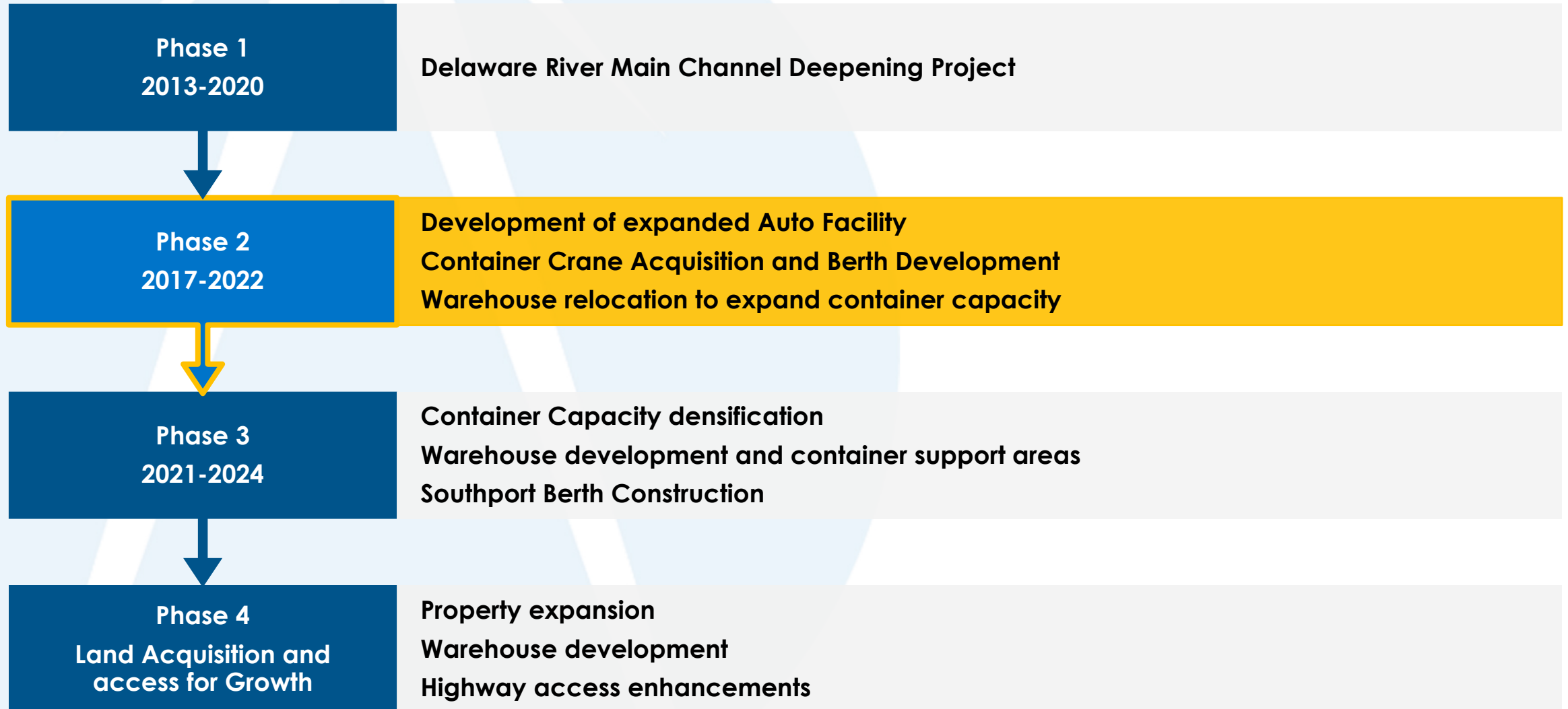
A stylized graphic of a globe, composed of several light blue curved segments separated by white lines, creating a sense of motion or segments. It is positioned on the left side of the slide, partially behind the title text.

Transportation and Infrastructure Priorities

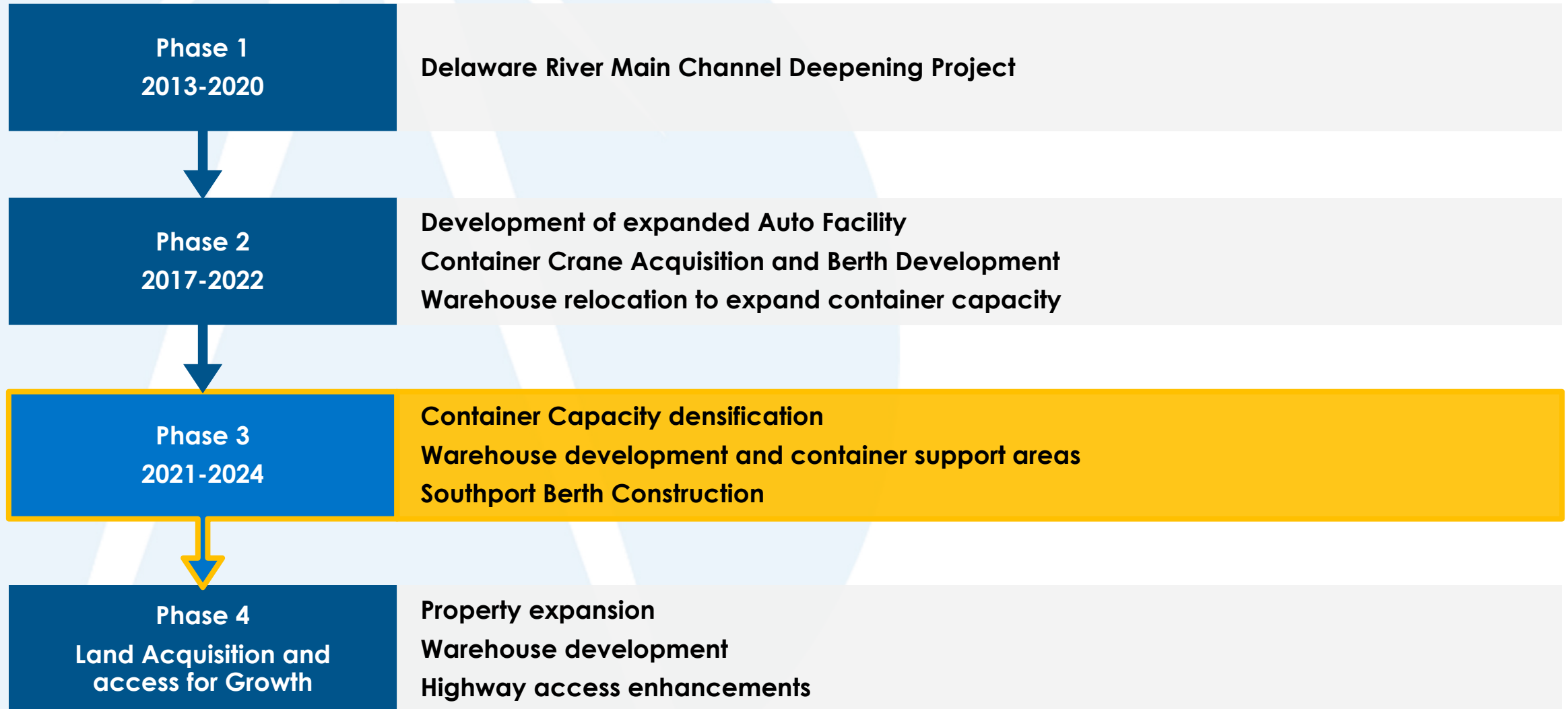
PhilaPort's Continued Expansion Program



PhilaPort's Continued Expansion Program



PhilaPort's Continued Expansion Program



PhilaPort's Continued Expansion Program



Port Master Planning Update

- **Recently completed update to 2019 Capital Plan.**
- **Approximately \$3.6B in identified projects:**
 - PAMT Densification
 - Land Acquisition/Development to Support Container Growth
 - Warehouse Development
 - Road/Access Improvements
 - Berth Modernization
 - Phase 2 Channel Deepening
- **Completed process of bringing on a group of on-call planning firms to support PhilaPort master planning needs.**
- **Currently scoping a strategic master plan review**

The map displays the Port of Philadelphia with various property zones color-coded and labeled. The zones include:

- PHILAPORT** (Blue areas)
- TRC INC.** (Purple area)
- TEZ REAL ESTATE** (Purple area)
- CSX OR NORFOLK-SOUTHERN** (Orange area)
- PHILADELPHIA ELECTRIC COMPANY** (Purple area)
- DELWARE EAST ASSOC. LP** (Purple area)
- DELWARE EAST ASSOC. LP** (Purple area)
- PHILAPORT** (Blue area)
- DELWARE AVE ENTERPRISES, INC.** (Green area)
- INEOS USA** (Red area)
- PHILAPORT** (Blue area)
- DELWARE AVE ENTERPRISES, INC.** (Green area)
- PHILAPORT** (Blue area)

Infrastructure and other labels include:

- CHRYSLER AVENUE**
- PIERHEAD LINE**
- BULKHEAD LINE**
- CRISTO COLUMBUS BOULEVARD**
- PORTER STREET**
- SWYDER AVENUE**
- RIGHT-OF-WAY RESERVED FOR DELAWARE RIVER PORT AUTHORITY**
- RIGHT-OF-WAY RESERVED FOR SEWER PURPOSES**
- RIGHT-OF-WAY RESERVED FOR WATER MAIN PURPOSES**
- DELWARE AVE TO BE STRICKEN FROM CITY PLAN**

A legend in the bottom right corner identifies the color-coded zones:

- PHILAPORT** (Blue)
- HOLT LOGISTICS/ GREENWICH TERMINALS** (Green)
- RAILROADS** (Orange)
- ASHLAND CHEMICAL/ INEOS USA** (Red)
- PRIVATE PROPERTY NO COORDINATION REQUIRED** (Purple)
- DELWARE AVE TO BE STRICKEN FROM CITY PLAN** (Yellow)

Priority Projects | Packer Avenue Marine Terminal

PhilaPort IntraPort Transportation Corridor



Project Description:

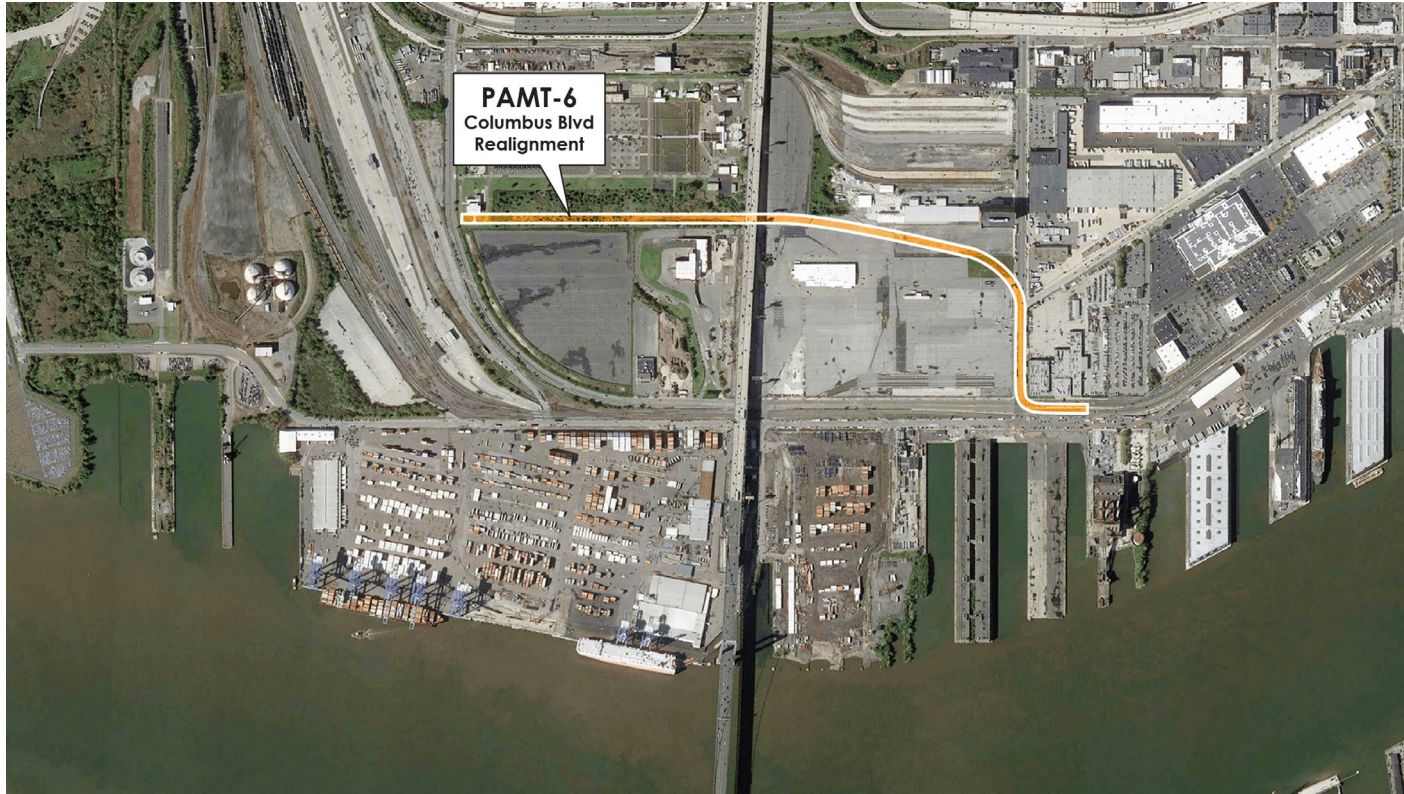
- Transition a portion of Old Delaware Ave. from the City to the Port and create a dedicated port corridor. Fencing, signage, and additional lighting will be provided. Project will also include dedicated access and egress points and associated improvements to our “Whiskey Yard” complex.

Project Benefit:

- Project will provide for direct and improved connections between key terminals and roadways.

Priority Projects | Packer Avenue Marine Terminal

Columbus Boulevard Realignment



Project Description:

- Realign Columbus Blvd to extend behind 98 Annex parcel. Develop Port Road along existing portion of Columbus Blvd extending from 98 Annex to Old Delaware Avenue.

Project Benefit:

- Project will improve operations by allowing for dedicated port road. Project improves connectivity between PAMT and future near-terminal container support lands.



Thank You!



PhilaPort

THE PORT OF PHILADELPHIA

✓ Velocity ✓ Proximity ✓ Flexibility

www.philaport.com